

# 2021-2022 Online Professional Development Schedule

Join us for two webinar series scheduled throughout the school year:

- **Coffee Break Webinars:** a quick look at resources and strategies for using the DRDP
- **Learn It & Use It:** more in-depth one-hour sessions on linking DRDP results to instruction



## Coffee Break Webinars 3:00-3:15 pm

---

### Coffee with Steve: DRDP Essential Steps

Register: [Tuesday, August 31, 2021](#) or [Thursday, September 2, 2021](#)

---

### Coffee with Elizabeth: Transferring Data from SEIS or SIRAS into DR Access Reports

Register: [Tuesday, September 14, 2021](#) or [Thursday, September 16, 2021](#)

---

### Coffee with Elizabeth and Therese: Producing and Using the Child Report

Register: [Tuesday, October 19, 2021](#)

---

### Coffee with Elizabeth and Patty: Producing and Using the Peer Reference Report

Register: [Tuesday, October 26, 2021](#)

---

### Coffee with Therese: Break it Down: Identifying Learning Opportunities Based on DRDP Results

Register: [Tuesday, November 2, 2021](#) or [Thursday, November 4, 2021](#)

---

### Coffee with Steve: Sharing the DRDP with Families

Register: [Tuesday, December 7, 2021](#) or [Thursday, December 9, 2021](#)

---

### Coffee with Therese: Break it Down: Identifying Learning Opportunities Based on DRDP Results

Register: [Tuesday, January 11, 2022](#) or [Thursday, January 13, 2022](#)

---

### Coffee with Patty: Using Adaptations: Assessment & Instruction

Register: [Tuesday, February 8, 2022](#) or [Thursday, February 10, 2022](#)

---

### Coffee with Patty: Using the DRDP with Specialized Populations

Register: [Tuesday, March 8, 2022](#) or [Thursday, March 10, 2022](#)

---

### Coffee with Therese: Linking the DRDP to Planning Child Goals and Outcomes

Register: [Tuesday, April 12, 2022](#) or [Thursday, April 14, 2022](#)

---

### Coffee with Elizabeth and Therese: Producing and Using the Child Report

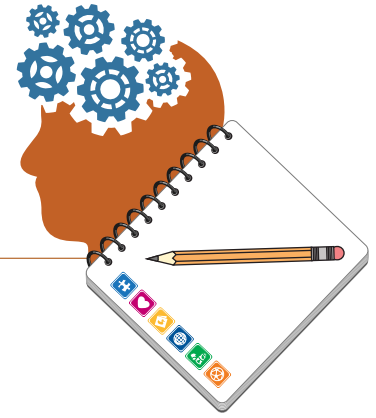
Register: [Tuesday, May 3, 2022](#) or [Thursday, May 5, 2022](#)

---

### Coffee with Elizabeth and Patty: Producing and Using the Child Progress Report

Register: [Tuesday, May 10, 2022](#) or [Thursday, May 12, 2022](#)

## Learn It & Use It Sessions 2:30-3:30 pm



---

### DRDP for New Administrators

Join Steve and Patty for an overview of DRDP requirements, resources to support staff, and the use of DRDP data at the local, state, and federal level.

Register: [Wednesday, September 8, 2021](#)

Who should attend: Administrators of early childhood special education programs

---

### Using the Foundations in Inclusive Settings with Guest Speaker Tamarra Barrett-Osborne

Therese and Tamarra share how the California Early Learning Foundations can be a useful resource to promote positive child in inclusive settings.

Register: [Thursday, September 30, 2021](#)

Who should attend: Special educators and their general education partners

---

### DR Access Reports

Elizabeth walks through how to produce the reports of DRDP results available in DR Access Reports.

Register: [Wednesday, November 3, 2021](#)

Who should attend: Special educators

---

### Break it Down Practice: Identifying Learning Opportunities Based on DRDP Results Practice

Therese leads you through examples of breaking down goals into proximal learning targets. Bring a goal to practice the process yourself.

Register: [Tuesday, November 9, 2021](#) or [Wednesday, January 19, 2022](#)

Who should attend: Special educators and their general education partners

---

### DR Access Reports

Elizabeth walks through how to produce the reports of DRDP results available in DR Access Reports.

Register: [Tuesday, March 15, 2022](#)

Who should attend: Special educators

---

### Indicator 7 Reports for LEAs

Steve and Elizabeth explain how you can locate the child outcomes reporting for the State Performance Plan/Annual Performance Report (SPP/APR) for your school district and SELPA and produce a summary of results.

Register: [Tuesday, May 17, 2022](#)

Who should attend: Administrators of early childhood special education programs

---